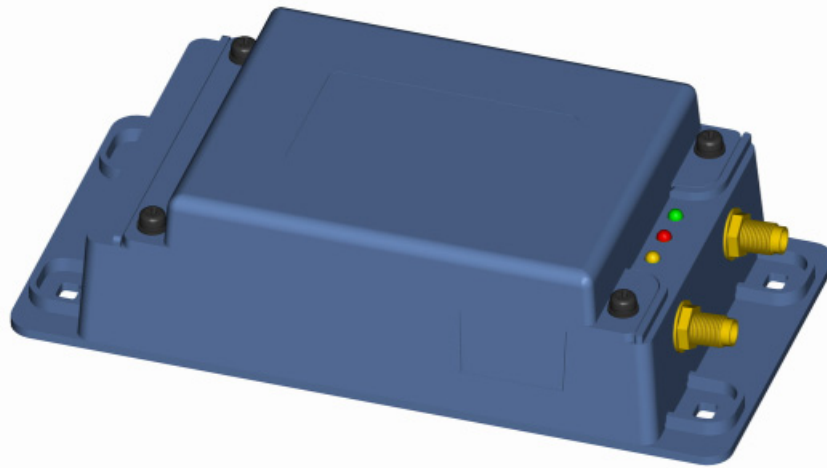
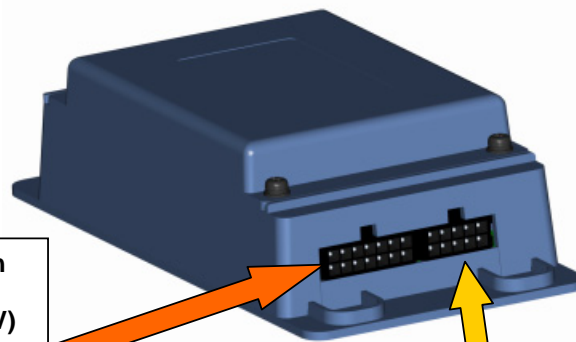




SuperGuard Vehicle Tracker VT-02



- GPS location
- GSM/ GPRS interface (for communication/ GPS data transmission)
- Hands-free and cell phone capabilities
- Built-in shock sensor (alarm through siren, Control Base, short message to vehicle owner's mobile phone)
- Wireless History Upload (internal 256KB EEPROM), wireless firmware upgrading of car unit via GPRS
- Car remote interface to receive commands from Control Base or user's GSM phone (door lock/unlock, engine shut down, car battery status/off, flash lights)
- Li-Ion Battery Pack (up to 24h stand-by without car battery support)

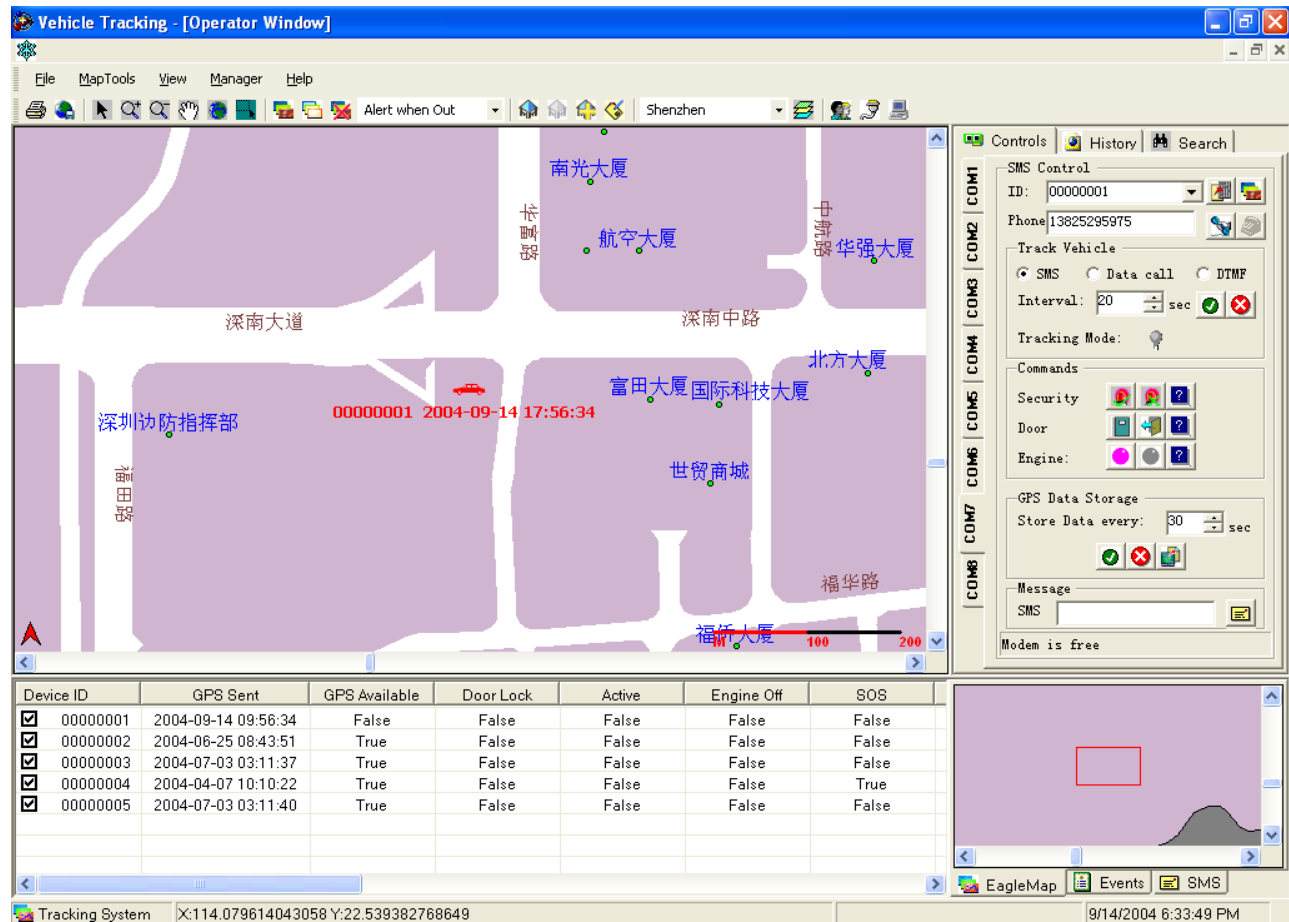


- Input from ext. SOS Push Button
- Input from Car Crash Sensor
- Input from Operation Power (12V)
- Input from Ignition Switch
- I/O for Door lockers (lock/ unlock)
- I/O for Engine
- Output for Siren (Horn), Flashlight

- Input from external Microphone
- Output for external Speaker
- Output for RS 232 Device (e.g. PDA)

Vehicle Tracking Software

Features:



- Location, monitoring, tracking through GPS in real time status
- Connectivity through GSM terminal, GPRS Socket, phone/ fax modem, Data Call
- User-friendly interface/ quick access to vehicle and user database
- Easy setup/ editing / initializing of additional car units
- Fast GSM interface to user database (vehicle units/ mobile phone numbers/ contacts)
- Up to 5 Individual Geo-Fence setup for each car
- One-click command-List (activate/ disarm vehicle unit, door lock/ unlock, engine on/off) and query status
- Write and send short messages
- Real-Time monitoring of Tracking Objects (20 sec interval and up)
- Archive/ Upload History over
- Create and Edit Points of Interest (POI)
- Add map layers/ Move/ Zoom functions
- Extensive Map/ Location Search function, Shortest Path/ Route Planner
- Online Upgrade Function